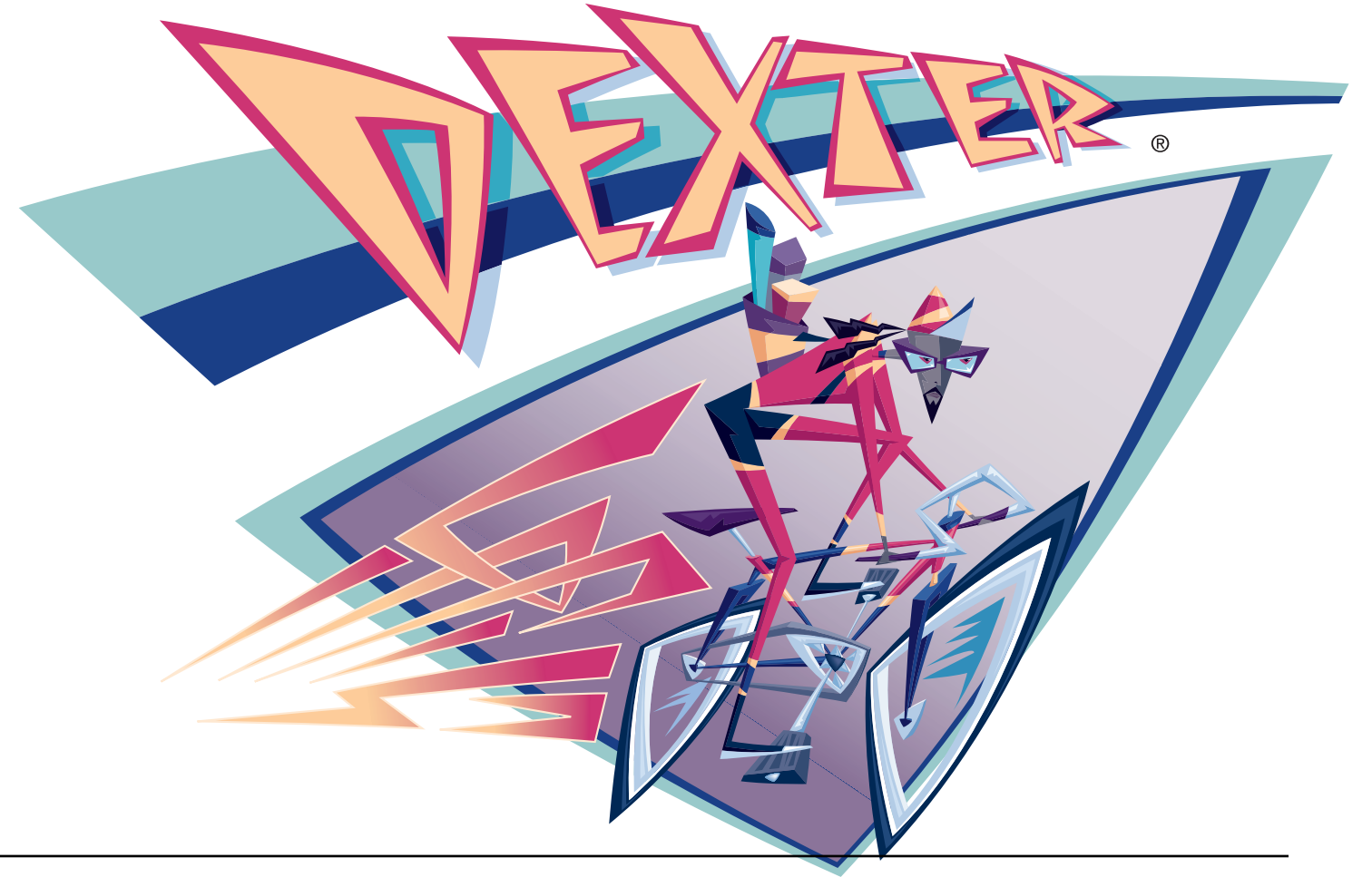


## **The Dexter® System**

*Making ATM branch office networking affordable*



## **The Dexter® System**

*Making ATM branch office networking affordable*



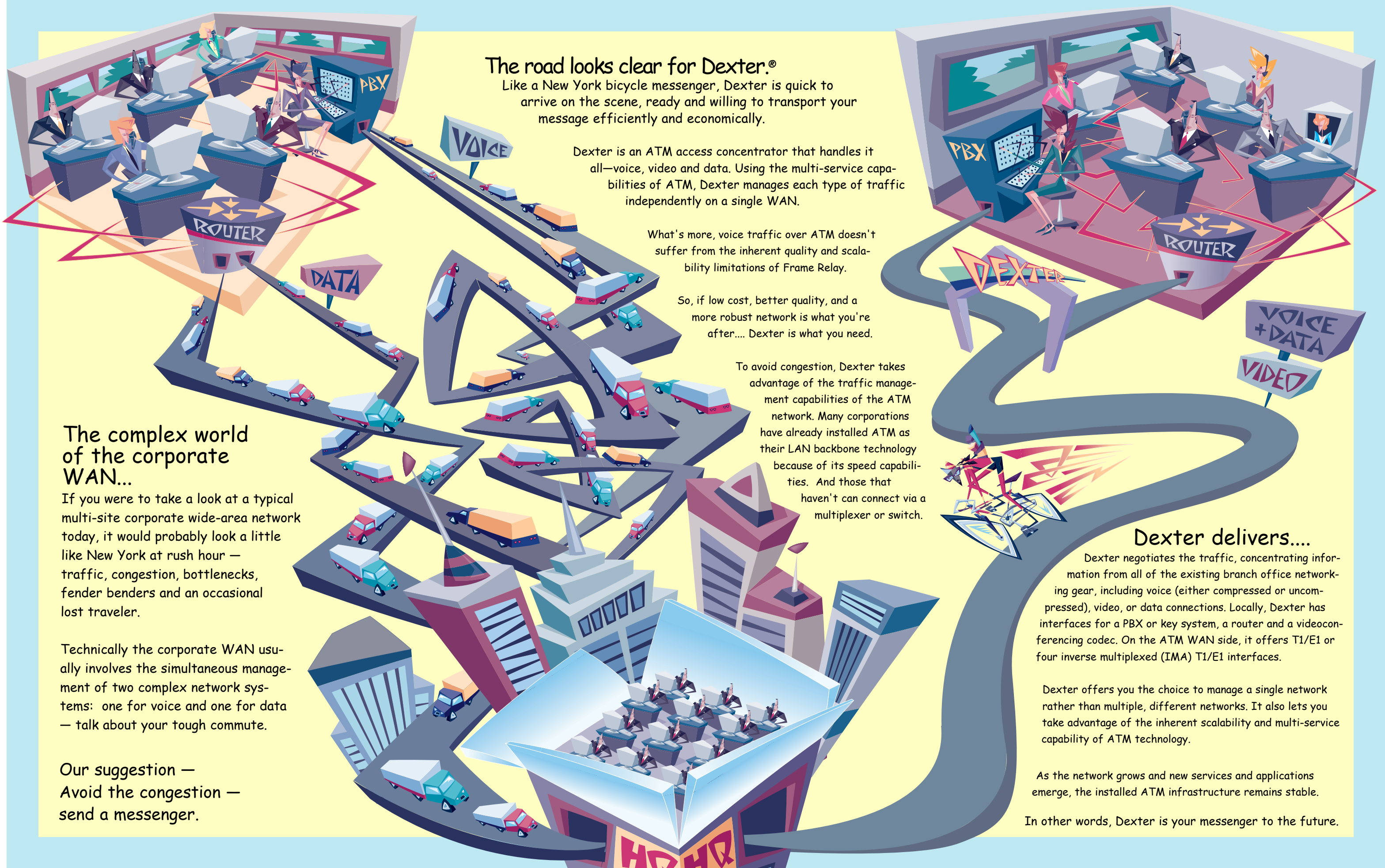
1585 South Manchester Avenue  
Anaheim, CA 92802-2907  
Tel 714.780.7685  
Toll free 800.374.4783

Sales 714.780.7987  
Fax 714.780.7696  
E-mail [limosales@marinernetworks.com](mailto:limosales@marinernetworks.com)  
[www.marinernetworks.com](http://www.marinernetworks.com)

**Odetics Europe**  
Tel +44(0)118.927.4607  
Fax +44(0)118.944.0069  
E-mail [ixb@odetics.co.uk](mailto:ixb@odetics.co.uk)

**Odetics Asia Pacific**  
Tel +(65) 324.0636  
Fax +(65) 324.0626  
E-mail [dca@odetics.com](mailto:dca@odetics.com)





## The road looks clear for Dexter.®

Like a New York bicycle messenger, Dexter is quick to arrive on the scene, ready and willing to transport your message efficiently and economically.

Dexter is an ATM access concentrator that handles it all—voice, video and data. Using the multi-service capabilities of ATM, Dexter manages each type of traffic independently on a single WAN.

What's more, voice traffic over ATM doesn't suffer from the inherent quality and scalability limitations of Frame Relay.

So, if low cost, better quality, and a more robust network is what you're after.... Dexter is what you need.

To avoid congestion, Dexter takes advantage of the traffic management capabilities of the ATM network. Many corporations have already installed ATM as their LAN backbone technology because of its speed capabilities. And those that haven't can connect via a multiplexer or switch.

## The complex world of the corporate WAN...

If you were to take a look at a typical multi-site corporate wide-area network today, it would probably look a little like New York at rush hour — traffic, congestion, bottlenecks, fender benders and an occasional lost traveler.

Technically the corporate WAN usually involves the simultaneous management of two complex network systems: one for voice and one for data — talk about your tough commute.

Our suggestion —  
Avoid the congestion —  
send a messenger.

## Dexter delivers....

Dexter negotiates the traffic, concentrating information from all of the existing branch office networking gear, including voice (either compressed or uncompressed), video, or data connections. Locally, Dexter has interfaces for a PBX or key system, a router and a videoconferencing codec. On the ATM WAN side, it offers T1/E1 or four inverse multiplexed (IMA) T1/E1 interfaces.

Dexter offers you the choice to manage a single network rather than multiple, different networks. It also lets you take advantage of the inherent scalability and multi-service capability of ATM technology.

As the network grows and new services and applications emerge, the installed ATM infrastructure remains stable.

In other words, Dexter is your messenger to the future.